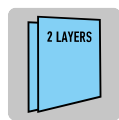
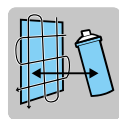
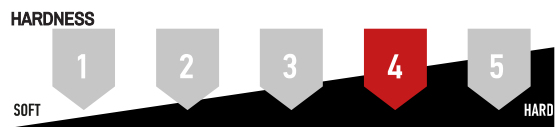
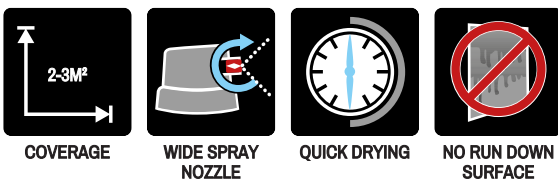




FROSTED GLASS EFFECT SPRAY



Frosted Glass Effect acrylic spray paint for glass and most hard plastic surfaces. Ideal for use in small decorative items such as lanterns and vases and also for larger glass surfaces eg. glass surfaces, windows, glass doors, sliding doors, shower walls and windows of saunas.

Test the suitability on plastic surfaces by spraying a small test batch on an invisible spot. Some plastics, such as polycarbonates or acrylics might react with the solvents of the product. Paint at least two layers and let dry in between of the layers until matt.

Gloss: below 20 (matt).

Coverage: around 2-3m² depending on the layer thickness.

Drying times (20 °C): Dust dry 5 - 10 min, touch dry 15 min., dry 24 hours. Drying time depends on the temperature, the humidity and the layer thickness.

Heat resistance: +110 ° C.

BINDER: Acryl

DEGREE OF GLOSS (DIN 67530 60 °):
matt 0-25 gloss units

STORAGE STABILITY: 60 months

SIZE: 400ml

SALES QTY:
400ml: 6 pcs

MASTON Frosted Glass Effect Spray

Art. No.	MASTON Frosted Glass Effect Spray	Color	Barcode
1801008	Spraypaint Frosted glass effect 400ml	○	6412490032555